

₹ Sustainability Shoppe

Support Local

Kumari Slis

The Problem

- Lack of market - Sustainability Shoppe provides a platform for a direct connection between the customers and the producers
- Awareness among people who are greenwashed on a daily basis

Inspiration From

Bhoomi College
Keeday Community
Khetee Concept

- Was inspired by Bhoomi Santhe,
- Came back to Bihar and witnessed Agroforestry, Seed Conservation and Wild Forest Foods
- Looked like such a copycat thing to do

But :)



Inspiration From

There was no looking back then ..



Anil Jee and a child from Sahodaya Trust in a local market



- Sustainability Shoppe's first Mela was done on 24th July
- Initial aim was to create awareness among consumers on millets, medicinal plants, upcycling.

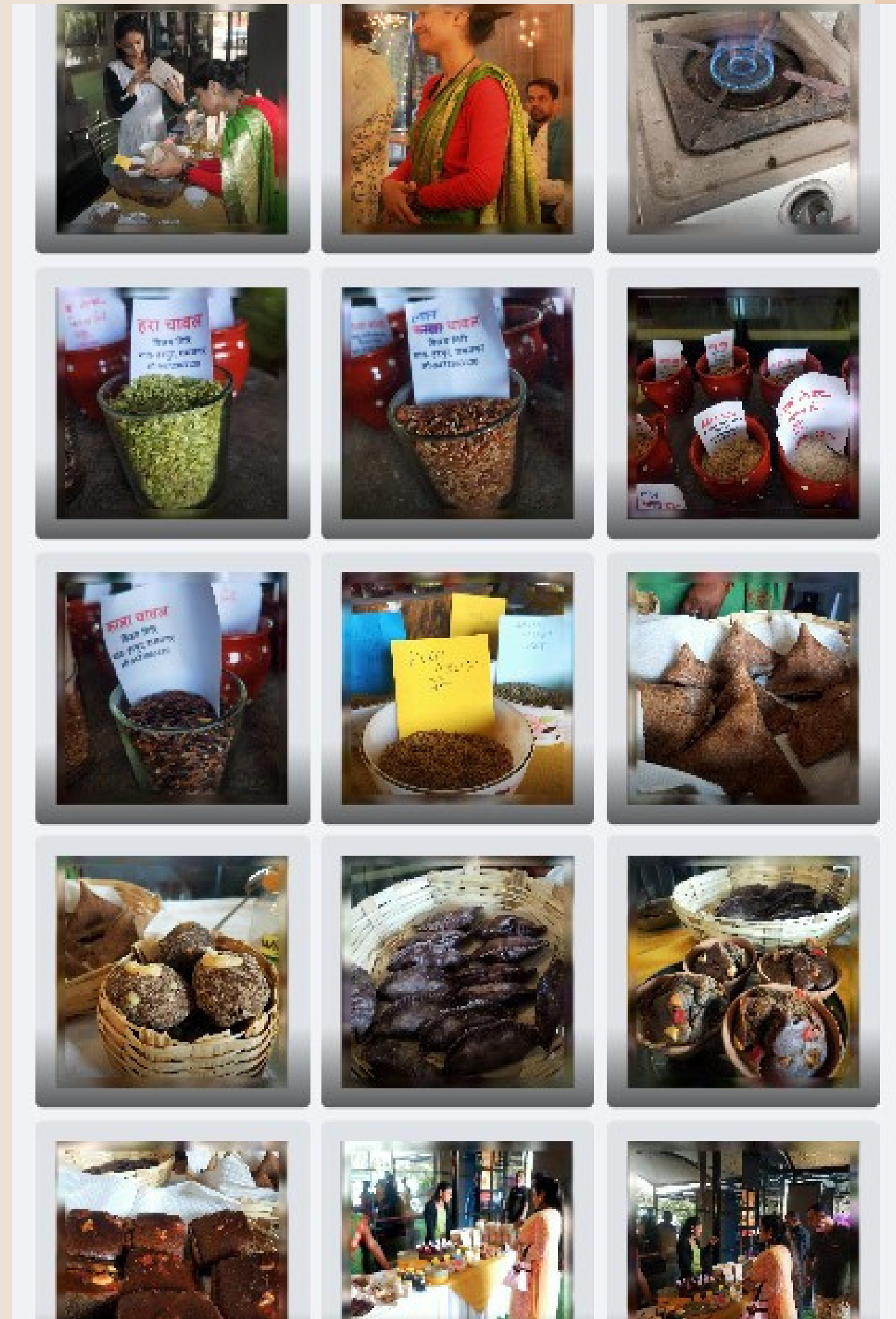
Snippets from the Mela



What is Sustainability Shoppe doing currently!

Happening Twice a Month!

- Maurya Patna has offered a space for Sustainability Shoppe.
- In our regular market, outside Bollywood Treats, Maurya, Patna, we are promoting Millet based products, Traditional and Forgotten Foods, Herbal Tea
- We also have some vegetables, fruits and grains.



Sitaram Ashram Mela, *A step towards Financial Sustainability*



Travel, Fooding and Lodging Expence was covered by
Sitaram Ashram



Sustainability Shoppe going Places!!



18th - 19th February

Sitararam Ashram

What Next?

- Sustainability Shoppe's idea was not limited to just a market. It has always been about awareness and people coming together and discuss issues and individual steps towards mitigating Climate Change.
- Along with Farmers' Market, Shoppe wants to work on promoting the use of Second-hand clothing and items.
- Want to open up an office-cum residential place, to facilitate this on a slightly bigger level.

This ..



A Thrift Mela

Sometime in April

Support Needed

- Need an intern who would help in organizing events.
- Mentoring support for a Thrift Mela
- Help in conceptualising the office-cum residential space
- Financial support:

-Travelling and accommodation charges for the event:

INR 15,000

-Stipend for intern: INR 15,000 (5,000x3)